

To: Catalina Dealers

RE: Procedure to check the gear shift travel and engagement of the Universal Model 35 diesel with Hurth HBW 100 (now known as ZF 10M transmission)

1. Shift into neutral at the pedestal. At the transmission end of the cable, tape the core of the cable to the sheath to keep it from moving. Gently pry the ball and socket apart from the fitting at the end of the cable separating it from the transmission lever. Move the lever forward and backwards to the limits of the travel in the neutral position. The ball should align with the socket in the center of the neutral position lever travel. If it doesn't adjust the position of the fitting on the end of the cable core, reattach the cable to the lever, remove the tape.

2. Shift into forward at the pedestal (the shift lever may hit the pedestal guard, this is of no consequence, as there is not a forward detent or stop on the transmission to stop the lever travel). Detach the cable from the lever , (the lever is aft when the gear is in forward), check that the lever has a little movement before hitting the neutral detent and is clear of the neutral detent, (there is no detent in forward or aft gear) as long as the lever is clear of the neutral detent it is engaged in the forward gear. Reattach the cable end to the transmission lever.

3. Shift into reverse at the pedestal, check the engagement as was done for forward gear, note the transmission lever will be forward when the reverse gear is engaged. The lever should be clear of the neutral detent when in gear. Reattach the cable to the lever.

(see the included drawing with detailed instructions for installation).

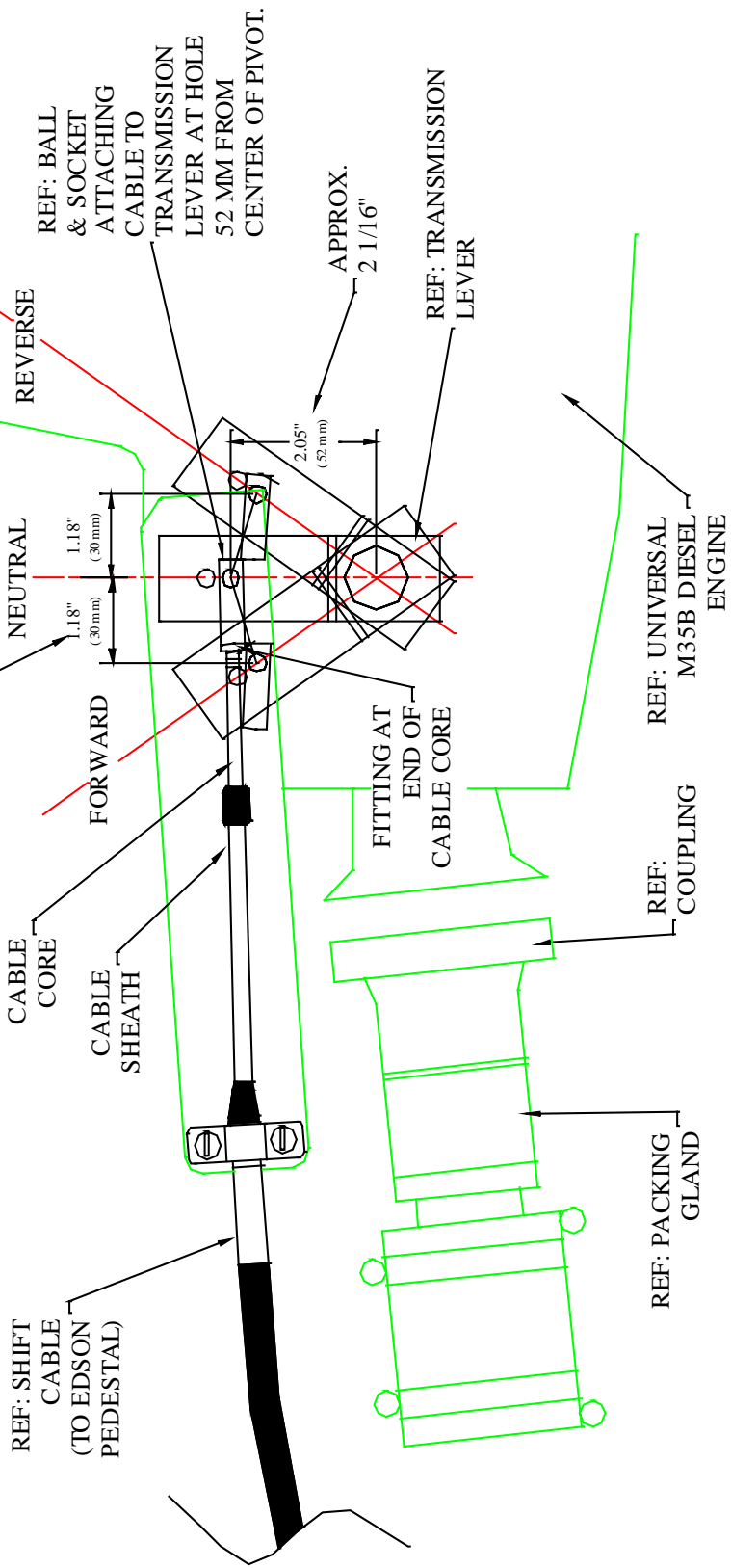
If you have any questions or problems with the installation process please call customer Catalina Customer Service (818) 884-7700 ext. 237 or e-mail to service_ca@catalinayachts.com.

Sincerely,

Eric W. Schlageter
Catalina Yachts Engineering

| REV | DESCRIPTION | APPROVAL | DATE |
|-----|------------------|----------|--------|
| 0 | ORIGINAL RELEASE | | 5/6/01 |

1.18" (APPROXIMATELY 1 3/16") MEASURED HORIZONTALLY FROM NEUTRAL CENTERLINE TO THE CENTER OF THE BALL IN THE LOWER HOLE IS THE MINIMUM DISTANCE REQUIRED FOR GEAR ENGAGEMENT



Catalina Yachts
 21200 VICTORY BLVD.
 WOODLAND HILLS, CA
 91367 - (818) 884-7700

SCALE: NONE
 DATE: 5/6/02
 DRAWN BY: K.W.N.
 REVISED:

GEAR SHIFT TRAVEL & ENGAGEMENT CHECK

BOAT: CATALINA 34, 36, & 350
 -- UNIVERSAL M35B

DRAWING NUMBER: 340-51002-0
 ENG. BULLETIN 57

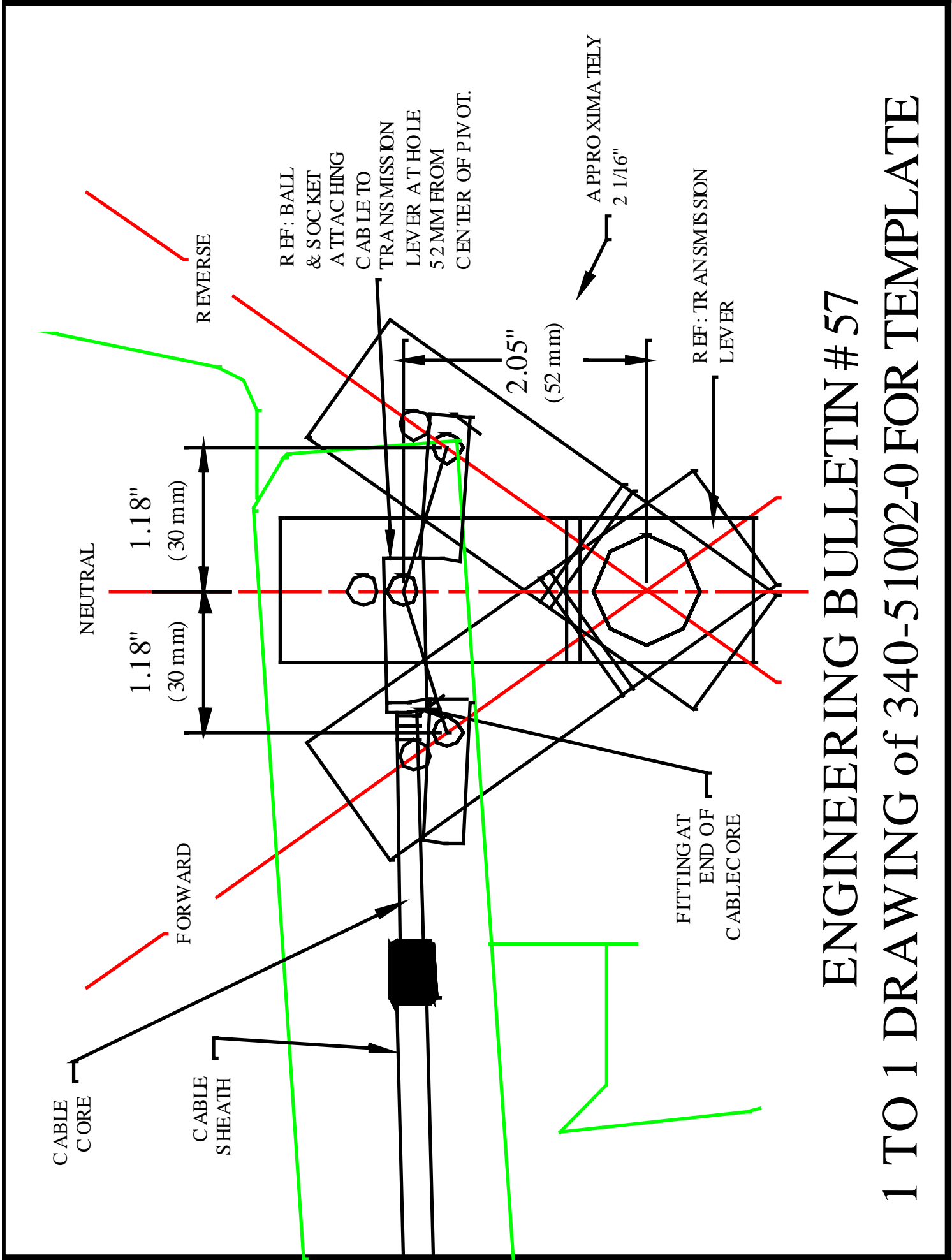
NOTES:

- 1) DRAWING GOOD FOR UNIVERSAL M35B ENGINE WITH HBW 100 TRANSMISSION. (CATALINA 34 MK II, CATALINA 36 MK II, & CATALINA 350)
- 2) BALL SHOULD BE INSTALLED IN THE LOWER HOLE ON THE TRANSMISSION LEVER.

PROPRIETARY INFORMATION
 THE DESIGN, INFORMATION, AND DATA CONTAINED HEREIN ARE PROPRIETARY AND ARE SUBMITTED IN CONFIDENCE AND SHALL NOT BE DISCLOSED, REPRODUCED, COPIED, OR IN ANY MANNER OR DUBLICATED, IN WHOLE OR IN PART, FOR ANY PURPOSES WHATSOEVER, WITHOUT THE WRITTEN PERMISSION OF CATALINA YACHTS, 21200 VICTORY BLVD., WOODLAND HILLS, CALIFORNIA 91367. THIS LEGEND SHALL BE MARKED ON ANY REPRODUCTION OF THIS DOCUMENT IN WHOLE OR IN PART. REPRODUCTION OF THIS DOCUMENT SHALL BE DEEMED TO BE AN ACCEPTANCE OF THE CONDITIONS SPECIFIED HEREIN.

UNLESS OTHERWISE SPECIFIED DIMENSIONS ARE IN INCHES
 GENERAL TOLERANCES
 ANGLES: ±0.5°
 X.X: ±0.1
 X.XX: ±0.01
 X.XXX: ±0.005
 SURFACE FINISH:

DO NOT SCALE DRAWING



ENGINEERING BULLETIN # 57

1 TO 1 DRAWING of 340-51002-0 FOR TEMPLATE